



**Williamson County Health Data Profile**

**Southern Illinois Healthcare, Community Benefits Department  
2003**

1239 E. Main St., P.O. Box 3988  
Carbondale, IL 62901  
(618)-457-5200  
[www.sih.net](http://www.sih.net)

# Williamson County, Illinois

---

## Table of Contents

---

### Williamson County

Demographics.....Page 3

Income and Economic Characteristics.....Page 11

Education.....Page 19

Health Care.....Page 25

Health Risk Behaviors.....Page 41

Crime and Violence.....Page 48

Sources.....Page 52

This project was funded by the US Department of Health & Human Services’ Delta State Rural Development Network Grant Program (DSRDN). The DSRDN is administered in Illinois by the Illinois Delta Network through Southern Illinois University’s Center for Rural Health & Social Service Development.

## **Demographics**

*The health of a community cannot be fully assessed without a clear knowledge of the makeup of the population. (The number of residents, where do they reside, is a community growing, and what are the racial and ethnic characteristics of the population?)*

# Williamson County, Illinois

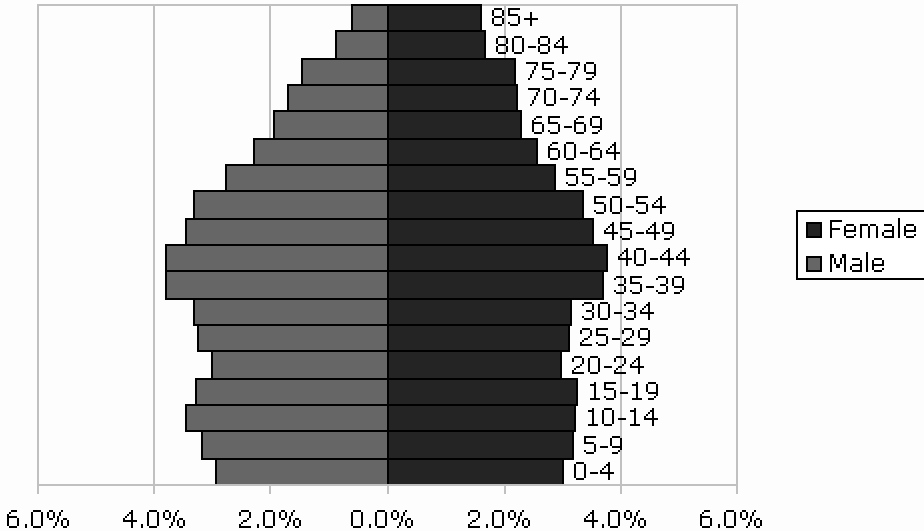
## Demographics – Age and Gender of Population

*U. S. Census Bureau 2000 data*

Subject	Number	Percent
Total population	61,296	100
<b>SEX AND AGE</b>		
Male	29,691	48.4
Female	31,605	51.6
Under 5 years	3,655	6
5 to 9 years	3,882	6.3
10 to 14 years	4,084	6.7
15 to 19 years	3,989	6.5
20 to 24 years	3,684	6
25 to 34 years	7,880	12.9
35 to 44 years	9,210	15
45 to 54 years	8,364	13.6
55 to 59 years	3,462	5.6
60 to 64 years	2,963	4.8
65 to 74 years	4,983	8.1
75 to 84 years	3,789	6.2
85 years and over	1,351	2.2

The median population age in Williamson County, Illinois is 38.8 years. Age and gender data for Williamson County mirror the data for the state of Illinois.

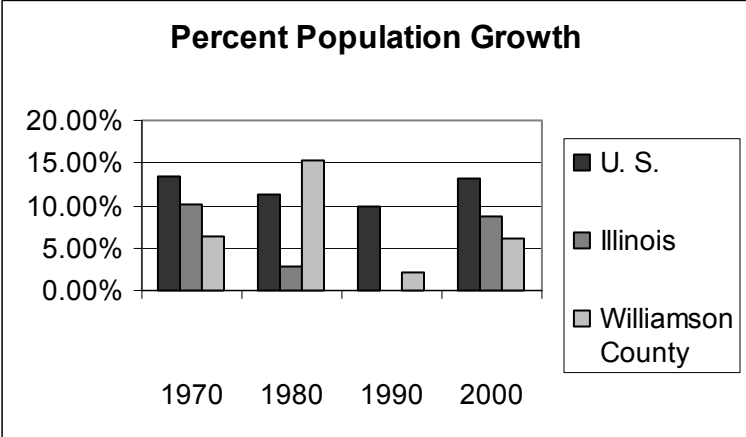
**Age Distribution, 2000**



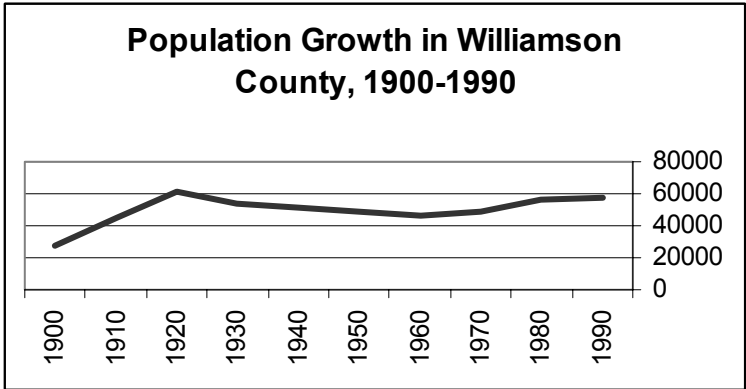
From: <http://www.censusscope.org>

# Williamson County, Illinois

## Population Change



Source: Census 2000 analyzed by the Social Science Data Analysis Network (SSDAN).



Data from: <http://www.census.gov>

Williamson County population growth was rapid from 1900 to 1920, and has been steady since.

# Williamson County, Illinois

## Cities and Townships

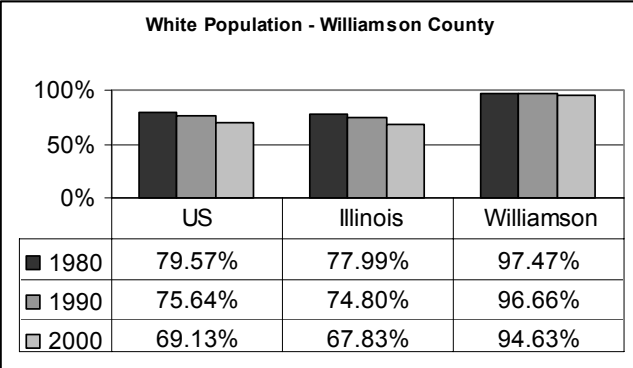
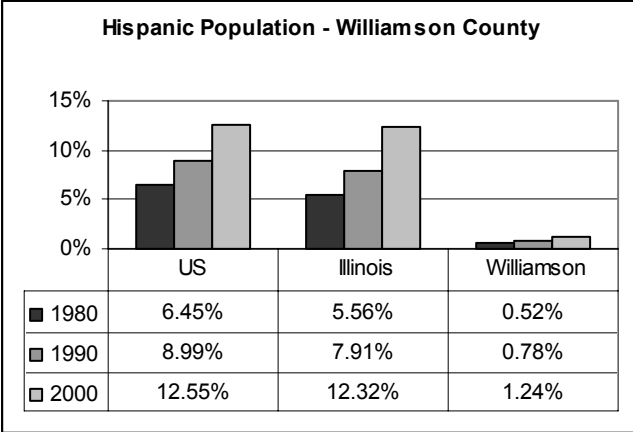
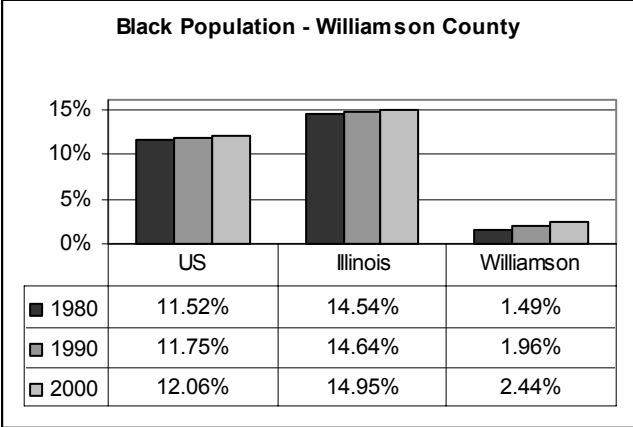
City	Population
<a href="#">Marion</a>	15,810
<a href="#">Herrin</a>	11,107
<a href="#">Carterville</a>	3,947
<a href="#">Johnston City</a>	3,599
<a href="#">Cambria</a>	1,320
<a href="#">Energy</a>	1,305
<a href="#">Crainville</a>	1,064
<a href="#">Hurst</a>	825
<a href="#">Creal Springs</a>	776
<a href="#">Pittsburg</a>	625
<a href="#">Bush</a>	362
<a href="#">Stonefort</a>	319
<a href="#">Whiteash</a>	271
<a href="#">Spillertown</a>	258
<a href="#">Colp</a>	246

<http://www.capitolimpact.com>

# Williamson County, Illinois

## Racial Diversity

Data from: [www.censusscope.org](http://www.censusscope.org)



# Williamson County, Illinois

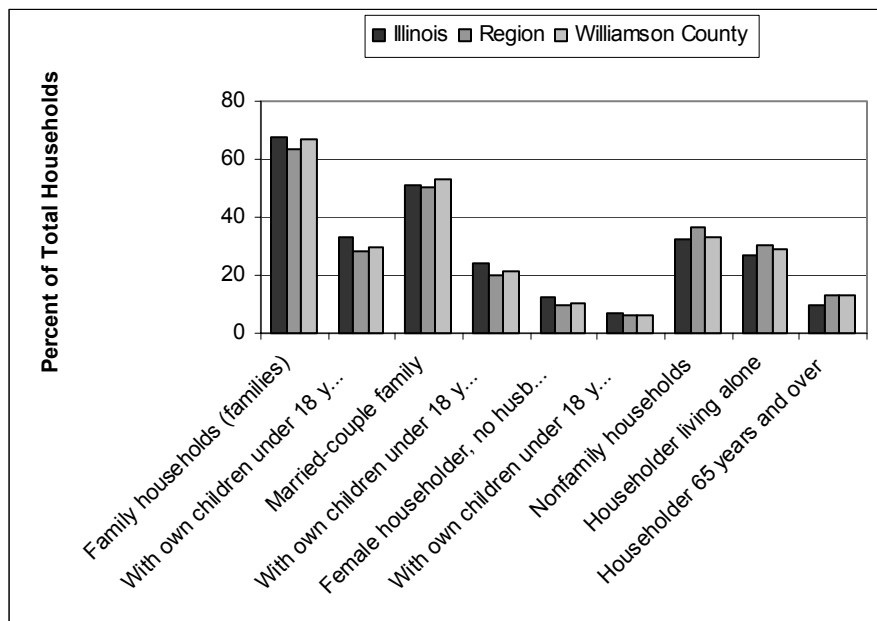
## Williamson County Household Types

HOUSEHOLDS BY TYPE	Illinois		Region*		Williamson	
<b>Total households</b>	<b>4,591,779</b>	<b>100.00</b>	<b>96,950</b>	<b>100.0</b>	<b>25,358</b>	<b>100</b>
Family households (families)	3,105,513	67.60	61,690	63.6	16,969	66.9
With own children under 18 years	1,514,561	33.00	27,235	28.1	7,469	29.5
Married-couple family	2,353,892	51.30	48,797	50.3	13,531	53.4
With own children under 18 years	1,113,582	24.30	19,625	20.2	5,453	21.5
Female householder, no husband present	563,718	12.30	9,553	9.9	2,598	10.2
With own children under 18 years	315,957	6.90	5,826	6.0	1,564	6.2
Nonfamily households	1,486,266	32.40	35,260	36.4	8,389	33.1
Householder living alone	1,229,807	26.80	29,550	30.5	7,324	28.9
Householder 65 years and over	438,693	9.60	12,803	13.2	3,373	13.3
Households with individuals under 18 years	1,663,878	36.20	29,444	30.4	8,049	31.7
Households with individuals 65 years and over	1,064,919	23.20	26,589	27.4	7,101	28
Average household size	2.63		2.35		2.35	(X)
Average family size	3.23		2.90		2.89	(X)

U.S. Census 2000 Data

\*Region includes seven area counties, Franklin, Jackson, Johnson, Perry, Saline, Union and Williamson

\*\*Indented housing types are subsets of the housing type above them.



Williamson County household characteristics mirror those of the region and state.

# Williamson County, Illinois

## Household Types, 1990-2000

Household Types, 1990-2000 - Williamson County

	1990		2000		Illinois 2000
	Number	Percent	Number	Percent	Percent
<b>Total Households</b>	<b>23,120</b>	<b>100.00%</b>	<b>25,358</b>	<b>100.00%</b>	<b>100.00%</b>
<b>Married Couple</b>	<b>13,380</b>	<b>57.90%</b>	<b>13,531</b>	<b>53.40%</b>	<b>51.30%</b>
<b>With Children*</b>	5,965	25.80%	5,453	21.50%	24.30%
<b>Without Children*</b>	7,415	32.10%	8,078	31.90%	27.00%
<b>Female-Headed</b>	<b>2,169</b>	<b>9.40%</b>	<b>2,598</b>	<b>10.20%</b>	<b>12.30%</b>
<b>With Children*</b>	1,255	5.40%	1,564	6.20%	6.90%
<b>Without Children*</b>	914	4.00%	1,034	4.10%	5.40%
<b>Male-Headed</b>	<b>564</b>	<b>2.40%</b>	<b>840</b>	<b>3.30%</b>	<b>4.10%</b>
<b>With Children*</b>	285	1.20%	452	1.80%	1.90%
<b>Without Children*</b>	279	1.20%	388	1.50%	2.20%
<b>Non-Family</b>	<b>7,007</b>	<b>30.30%</b>	<b>8,389</b>	<b>33.10%</b>	<b>32.40%</b>
<b>Householder Living Alone</b>	6,361	27.50%	7,324	28.90%	26.80%
<b>Two or More Persons</b>	646	2.80%	1,065	4.20%	5.60%

\* For the purposes of this table, "children" are people under age 18.

Source: Census 2000 analyzed by the Social Science Data Analysis Network (SSDAN).

## Williamson County, Illinois

### Housing

	Williamson	Illinois
Housing	County	
Housing units, 2000	27,703	4,885,615
Homeownership rate, 2000	73.6%	67.3%
Multi-unit housing structures, percent, 2000	13.8%	34.0%
Living in same house in 1995 and 2000, pct age 5+, 2000	59.0%	56.8%
Med. value of owner-occ housing units, 2000	\$63,300	\$130,800
Households, 2000	25,358	4,591,779
Persons per household, 2000	2.35	2.63
Housing units authorized by building permits, 2000	145	51,944

Data source: [www.census.gov](http://www.census.gov)

*An indication of quality of life is the presence in a county of affordable (and adequate) housing and home ownership. There are areas in the United States where the cost of housing is beyond the financial grasp of some residents. This can lead to a lack of stability within the county.*

## **Income and Economic Characteristics**

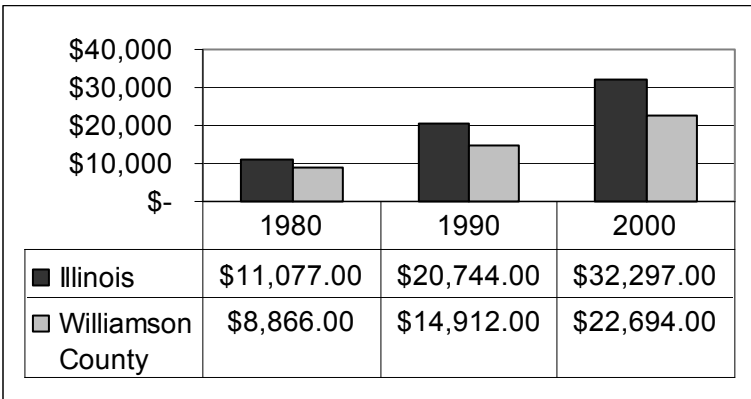
*A major factor influencing the health of a county is the health of its economy. Can residents find employment? How does the economy react to nationwide recessions and periods of economic growth or decline? What are personal, household and family income levels?*

# Williamson County, Illinois

## *Per Capita Personal Income – Williamson County*

(Data source: [www.bea.gov](http://www.bea.gov))

Personal income affects our communities and our lives. Income inequality leads to a poor standard of living, deficiencies in even the most basic of necessities such as food and health care. Personal, family and household incomes are measures that influence the type of house we occupy, automobile we drive and may even affect how our children perform in school.



In Williamson County, *per capita* personal income is growing much more slowly than for the state of Illinois. These data demonstrate the economic problems facing Williamson County.

# Williamson County, Illinois

## Household Income

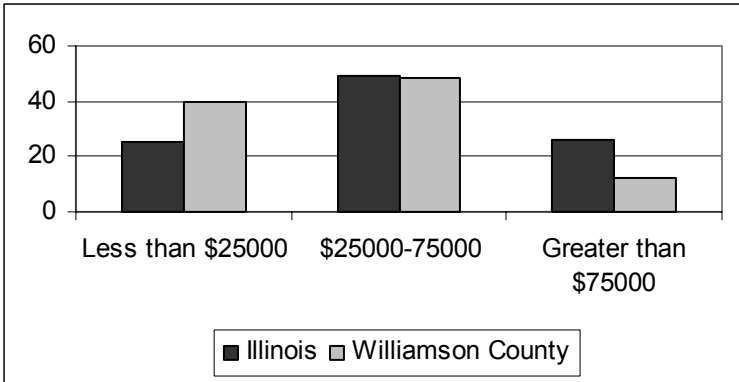
**INCOME IN 1999 - Williamson County, Illinois**

Household Income	Number	Percent
<b>Total</b>	<b>25,464</b>	<b>100</b>
Less than \$10,000	3,364	13.2
\$10,000 to \$14,999	2,255	8.9
\$15,000 to \$24,999	4,398	17.3
\$25,000 to \$34,999	3,591	14.1
\$35,000 to \$49,999	4,608	18.1
\$50,000 to \$74,999	4,135	16.2
\$75,000 to \$99,999	1,641	6.4
\$100,000 to \$149,999	989	3.9
\$150,000 to \$199,999	186	0.7
\$200,000 or more	297	1.2
Median household income (dollars)	31,991	(X)

*U.S. Census 2000 Data*

The chart and graph indicate that a large percentage of Williamson County households (39.4 percent) have income of less than \$25,000 per year. The median household income of Williamson County (\$31,991) is far below that of the state of Illinois (\$46,590). The high percentage of households in the low income ranges suggest that healthcare needs for Williamson County must reflect an above average need for assistance programs for the uninsured and underinsured.

### Percent of Households with Low, Medium and High Incomes in Williamson County



*U.S. Census 2000 data*

Household income differs in Williamson County compared to the state of Illinois. The percentage of households in the \$25,000 - \$75,000 range is similar, but there are proportionately more low income households and less high income households in Williamson County.

The percentage of households in a county that fall below the poverty level in household income is used to measure economic well-being.

# Williamson County, Illinois

## Family Income

[www.census.gov](http://www.census.gov) census 2000 data

Families	Williamson County		Illinois	
	17,222	100	3,125,318	100
Less than \$10,000	1,243	7.2	156,205	5
\$10,000 to \$14,999	1,017	5.9	105,747	3.4
\$15,000 to \$24,999	2,514	14.6	273,712	8.8
\$25,000 to \$34,999	2,431	14.1	331,907	10.6
\$35,000 to \$49,999	3,650	21.2	506,429	16.2
\$50,000 to \$74,999	3,588	20.8	736,897	23.6
\$75,000 to \$99,999	1,538	8.9	445,390	14.3
\$100,000 to \$149,999	869	5	356,068	11.4
\$150,000 to \$199,999	144	0.8	101,955	3.3
\$200,000 or more	228	1.3	111,008	3.6
Median family income (dollars)	40,692	(X)	55,545	(X)

The Williamson County median family income of \$40,692 is 73 percent of the median income (\$55,545) for the state of Illinois.

Williamson County has nearly 28 percent of its families with income of less than \$25,000. In the state of Illinois, 17.2 percent of families have incomes below \$25,000.

Family income is an indicator of quality of health in the population. Low family incomes may not support provision of nutritious food, proper sanitation, adequate housing, medical care and coverage.

# Williamson County, Illinois

## Poverty, 1999 Data – Williamson County

<http://quickfacts.census.gov/qfd/index.html>

<b>POVERTY STATUS IN 1999 (below poverty level)</b>	<b>Number</b>	<b>Percent</b>
<b>Families</b>	<b>1,959</b>	<b>(X)</b>
Percent below poverty level	(X)	11.4
With related children under 18 years	1,482	(X)
Percent below poverty level	(X)	18.1
With related children under 5 years	760	(X)
Percent below poverty level	(X)	23.9
<b>Families with female householder, no husband present</b>	<b>967</b>	<b>(X)</b>
Percent below poverty level	(X)	37.1
With related children under 18 years	878	(X)
Percent below poverty level	(X)	47.6
With related children under 5 years	459	(X)
Percent below poverty level	(X)	65.7
<b>Individuals</b>	<b>8,683</b>	<b>(X)</b>
Percent below poverty level	(X)	14.6
18 years and over	5,928	(X)
Percent below poverty level	(X)	13
65 years and over	1,007	(X)
Percent below poverty level	(X)	10.6
Related children under 18 years	2,696	(X)
Percent below poverty level	(X)	19.6
Related children 5 to 17 years	1,808	(X)
Percent below poverty level	(X)	17.8
Unrelated individuals 15 years and over	2,695	(X)
Percent below poverty level	(X)	26.5

(X) Not Applicable

# Williamson County, Illinois

## Poverty Thresholds for 2002 by Size of Family and Number of Related Children Under 18 Years (Dollars)

Source: [www.census.gov](http://www.census.gov)

Size of family unit	Related children under 18 years								
	None	One	Two	Three	Four	Five	Six	Seven	Eight or more
One person (unrelated individual)	9,359								
Under 65 years	8,628								
65 years and over									
Two persons	12,047	12,400							
Householder under 65 years	10,874	12,353							
Householder 65 years and over	14,072	14,480	14,494						
Three person	18,556	18,859	18,244	18,307					
Four persons	22,377	22,703	22,007	21,469	21,141				
Five persons	25,738	25,840	25,307	24,797	24,038	23,588			
Six persons	29,615	29,799	29,162	28,718	27,890	26,924	25,865		
Seven persons	33,121	33,414	32,812	32,285	31,538	30,589	29,601	29,350	
Eight persons	39,843	40,036	39,504	39,057	38,323	37,313	36,399	36,173	34,780
Nine persons or more									

# Williamson County, Illinois

## Labor Force and Employment

Source: [www.census.gov](http://www.census.gov)

EMPLOYMENT STATUS	Williamson County		Illinois	
	Number	Percent	Number	Percent
<b>Population 16 years and over</b>	<b>48,921</b>	<b>100</b>	<b>9,530,946</b>	<b>100</b>
In labor force	29,268	59.8	6,230,617	65.4
Civilian labor force	29,228	59.7	6,208,597	65.1
Employed	27,266	55.7	5,833,185	61.2
Unemployed*	1,962	4	375,412	3.9
Percent of civilian labor force	6.7	(X)	6	(X)
Armed Forces	40	0.1	22,020	0.2
Not in labor force*	19,653	40.2	3,300,329	34.6
<b>Females 16 years and over</b>	<b>25,501</b>	<b>100</b>	<b>4,934,988</b>	<b>100</b>
In labor force	13,883	54.4	2,913,502	59
Civilian labor force	13,870	54.4	2,909,574	59
Employed	13,077	51.3	2,740,019	55.5

**\* Definitions:**

**Unemployed**

All civilians 16 years old and over are classified as unemployed if they (1) were neither "at work" nor "with a job but not at work" during the reference week, and (2) were actively looking for work during the last 4 weeks, and (3) were available to accept a job. Also included as unemployed are civilians who did not work at all during the reference week, were waiting to be called back to a job from which they had been laid off, and were available for work except for temporary illness.

**Not in labor force**

Not in labor force includes all people 16 years old and over who are not classified as members of the labor force. This category consists mainly of students, housewives, retired workers, seasonal workers interviewed in an off season who were not looking for work, institutionalized people, and people doing only incidental unpaid family work (less than 15 hours during the reference week).

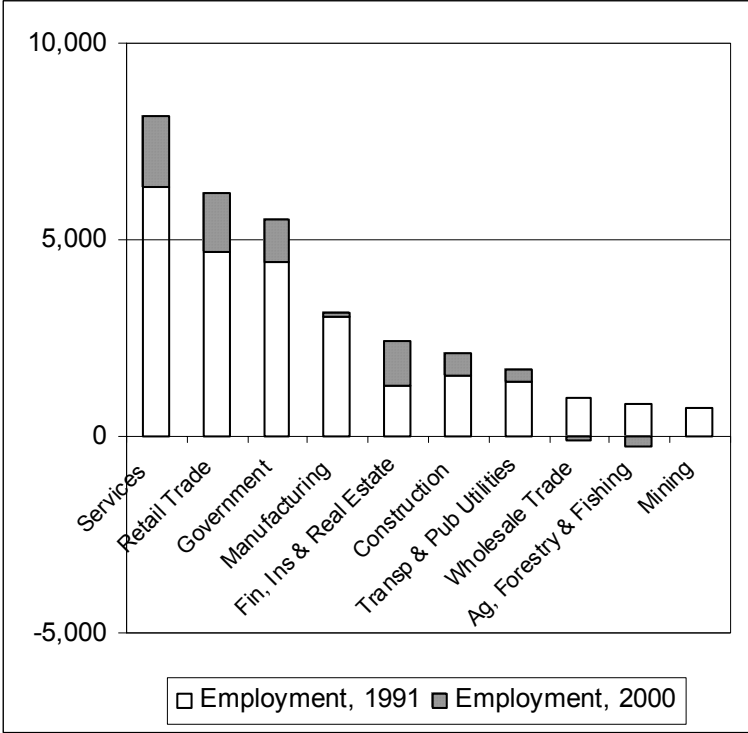
## Five Major Employers

[http://www.illinoisbiz.biz/com/community\\_profiles/c.html](http://www.illinoisbiz.biz/com/community_profiles/c.html)

City	Employer	Number Employed
Marion	Comm. Unit # 2	750
Marion	U.S. Veterans Hosp.	583
Marion	Pepsi Cola	450
Marion	Primex Corp.	420
Cartersville	John A. Logan Coll.	410

### Employment Growth by Sector

Employment growth (1991-2000) in each economic sector:



The largest economic sector employer in Williamson County is the service sector, followed by retail trade and government. The “wholesale trade,” “agriculture, forestry and fishing” and “mining” sectors had slightly decreased employment during this time.

*Having employment in diverse sectors of the economy provides job opportunities vital to the health of the county. Readily available jobs help the county retain young talent, attract new workers, and bring new business to the area. The above chart helps to visualize the strengths and weaknesses of the job market in Williamson County, Illinois.*

## **Education**

*There is a close relationship between education and economic health. To be competitive in our current national economy, communities must prepare individuals who are qualified to compete in a fast changing economic environment. When individuals gain knowledge and develop life skills pertaining to their own physical well-being and the means by which they can access needed services they are better prepared to maintain good overall health.*

*“Historically, the economy did not depend on education as much as it does today. A strong back mattered more than a strong mind. Today, there is an opportunity for schools and business to work together to meet the demands of a new workforce. Businesses can communicate needs, standards and expectations to our educators – and schools can respond to those needs.”*

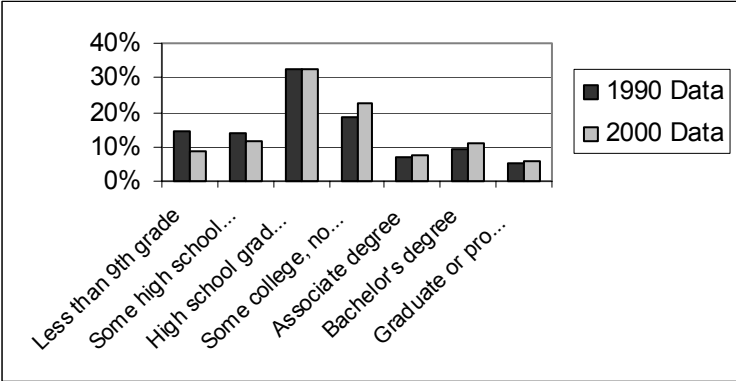
*Thomas Wolf  
President, The Wolf Organization*

# Williamson County, Illinois

## Education Attainment of the Population in Williamson County, Illinois

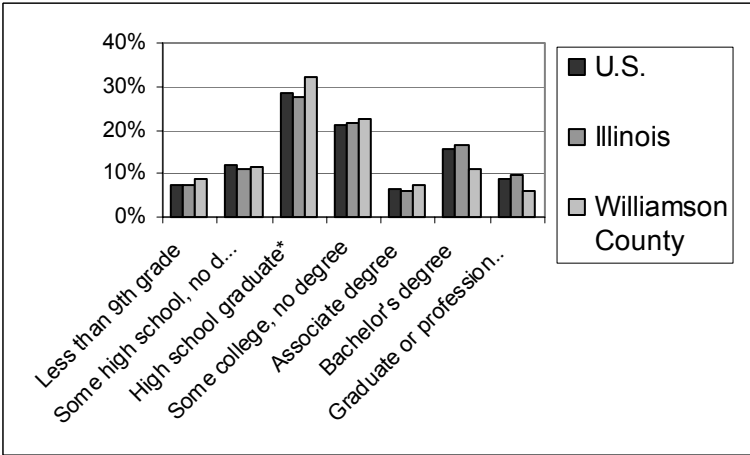
Data from [www.census.gov](http://www.census.gov)

### Percent of Population and Educational Attainment



Educational attainment of the population of Williamson County has basically remained unchanged from the year 1990 to 2000. There is a slightly lower percentage of those failing to complete high school.

### Educational Attainment of Williamson County, Illinois and the U.S. (2000)



Educational attainment for the population of Williamson County mirrors the data of the state and nation. Slightly larger percent of Williamson County residents have attained high school equivalency and slightly fewer have bachelors or graduate degrees.

# Williamson County, Illinois

**TABLE BY SCHOOL SCHOOL YEAR 2001-2002**

SCHOOL NAME (SCHOOL)	STATE ABBR (SCHOOL)	COUNTY NAME (DISTRICT)	TOTAL STUDENTS (SCHOOL)	BLACK, NON-HISPANIC STUDENTS (SCHOOL)	HISPANIC STUDENTS (SCHOOL)	WHITE, NON-HISPANIC STUDENTS (SCHOOL)	PUPIL/TEACHER RATIO (SCHOOL)
CARTERVILLE 5-8 GRADE SCHOOL	IL	WILLIAMSON	537	18	6	492	21.5
CARTERVILLE HIGH SCHOOL	IL	WILLIAMSON	470	9	7	449	20.4
CHITTYVILLE ALTERNATIVE CENTER	IL	WILLIAMSON	7	0	0	7	2.3
CRAB ORCHARD ELEMENTARY SCHOOL	IL	WILLIAMSON	284	0	0	284	28.4
CRAB ORCHARD HIGH SCHOOL	IL	WILLIAMSON	125	2	0	123	12.5
CREAL SPRINGS ELEM SCHOOL	IL	WILLIAMSON	151	1	0	150	13.7
HERRIN C U S D 4 ELEM SCHOOL	IL	WILLIAMSON	670	44	11	614	19.7
HERRIN HIGH SCHOOL	IL	WILLIAMSON	672	23	10	631	16.6
HERRIN MIDDLE SCHOOL	IL	WILLIAMSON	491	20	5	462	15.8
JEFFERSON ELEM SCHOOL	IL	WILLIAMSON	316	3	1	311	22.6
JEFFERSON ELEM SCHOOL	IL	WILLIAMSON	346	42	4	296	21.6
JOHNSTON CITY HIGH SCHOOL	IL	WILLIAMSON	354	0	3	351	18.2

## Williamson County, Illinois

LINCOLN ELEM SCHOOL	IL	WILLIAMSON	109	4	0	105	21.8
LINCOLN ELEM SCHOOL	IL	WILLIAMSON	421	33	4	381	20
LONGFELLOW ELEM SCHOOL	IL	WILLIAMSON	332	22	2	306	20.8
MARION HIGH SCHOOL	IL	WILLIAMSON	1,159	63	15	1,069	21.5
MARION JR HIGH SCHOOL	IL	WILLIAMSON	905	73	12	804	22.6
NORTH SIDE PRIMARY CENTER	IL	WILLIAMSON	406	23	2	376	20.8
TRI-C ELEM PRE-K - 2 SCHOOL	IL	WILLIAMSON	389	15	7	355	129.7
TRI-C ELEMENTARY 3-4 GRADE SCHOOL	IL	WILLIAMSON	250	8	4	234	7.8
WASHINGTON ELEM SCHOOL	IL	WILLIAMSON	479	9	1	469	18.4
WASHINGTON ELEM SCHOOL	IL	WILLIAMSON	640	61	4	571	18.8

(\*\*)= Column Data for Previous School Year, Numbers reported represent valid responses.

### Totals for Table

(totals only for numeric columns)

TOTAL STUDENTS (SCHOOL)	<b>9,513</b>
TOTAL BLACK, NON-HISPANIC STUDENTS (SCHOOL)	<b>473</b>
TOTAL HISPANIC STUDENTS (SCHOOL)	<b>98</b>
TOTAL WHITE, NON-HISPANIC STUDENTS (SCHOOL)	<b>8,840</b>

School Year 2001-2002

<http://nces.ed.gov/ccd/bat/index.asp>



## Williamson County, Illinois

### Implementation of the 8 Components of Coordinated School Health, 2001-2002

Schools – Union County, Illinois	Health Education	Physical Education	Health Services	Nutrition Services	Health Promotion for Staff	Counseling & Psychological Services	Healthy School Environment	Parent/Community Involvement
ANNA JUNIOR HIGH SCHOOL								
ANNA-JONESBORO HIGH SCHOOL								
COBDEN ELEM SCHOOL								
COBDEN HIGH SCHOOL								
COBDEN JR HIGH SCHOOL								
DAVIE ELEM SCHOOL								
DONGOLA ELEMENTARY SCHOOL								
DONGOLA HIGH SCHOOL								
DONGOLA JR HIGH SCHOOL								
JONESBORO ELEM SCHOOL								
LICK CREEK ELEM SCHOOL								
LINCOLN ELEM SCHOOL								
SHAWNEE ELEM SCHOOL - NORTH								
SHAWNEE ELEM SCHOOL - SOUTH								
SHAWNEE HIGH SCHOOL								
SHAWNEE JR HIGH SCHOOL								

Eight Components from: [http://www.cdc.gov/nccdphp/dash/about/school\\_health.htm](http://www.cdc.gov/nccdphp/dash/about/school_health.htm)

Schools from NCES: <http://nces.ed.gov/ccd/bat/index.asp>

## Health Care

*Indicators of the health of the residents in a county are descriptors of the vitality and life of its communities. These indicators include access to health care, the incidence of disease, and the extent to which residents engage in health risk behaviors. A community's health goes beyond these areas to examine issues of safety, environment and crime. While many take for granted the ability to see a doctor or access an emergency room, the reality is that many people do not get this access, and thereby endanger their health and their lives.*

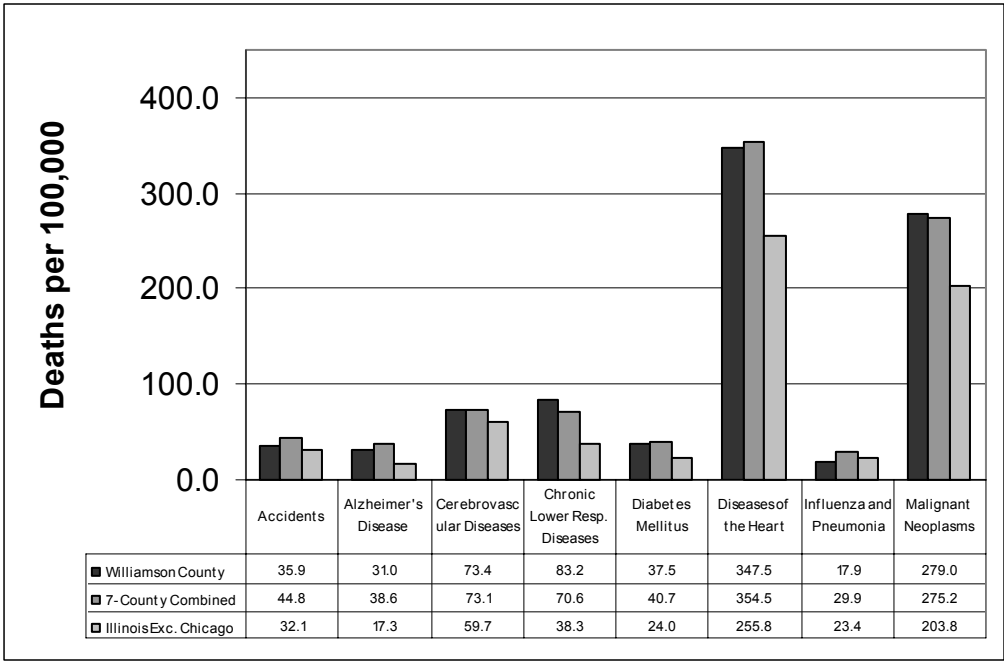
# Williamson County, Illinois

## Leading Causes of Mortality – 2000

Source: IDPH, ICHS

Cause of Death	Williamson	7-County Combined	Illinois Exc. Chicago
All Causes	<b>1197.5</b>	<b>1199.1</b>	855.8
Accidents	<b>35.9</b>	<b>44.8</b>	32.1
Alzheimer's Disease	<b>31.0</b>	<b>38.6</b>	17.3
Cerebrovascular Diseases	<b>73.4</b>	<b>73.1</b>	59.7
Chronic Lower Resp. Diseases	<b>83.2</b>	<b>70.6</b>	38.3
Diabetes Mellitus	<b>37.5</b>	<b>40.7</b>	24.0
Diseases of the Heart	<b>347.5</b>	<b>354.5</b>	255.8
Influenza and Pneumonia	17.9	<b>29.9</b>	23.4
Malignant Neoplasms	<b>279.0</b>	<b>275.2</b>	203.8

- A bold number indicates a county rate higher than state average
- \*Region includes seven area counties, Franklin, Jackson, Johnson, Perry, Saline, Union and Williamson

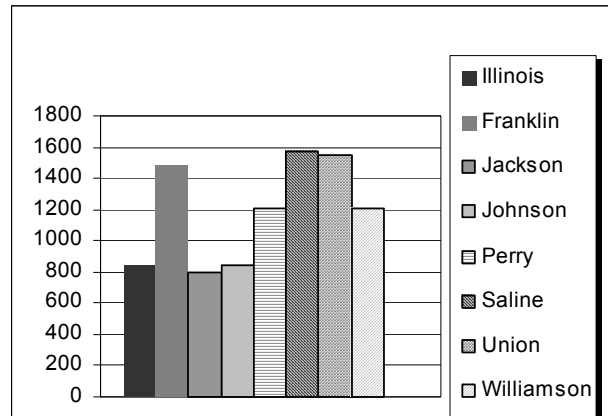


\*Region includes seven area counties, Franklin, Jackson, Johnson, Perry, Saline, Union and Williamson

## Williamson County, Illinois

### Mortality Rates (Deaths/100,000) in Illinois and Williamson County, 2001 Data from IPLAN

	Deaths/100,000	Deaths
<b>Illinois</b>	<b>840.1</b>	<b>104858</b>
Franklin	1478.1	575
Jackson	799.0	469
Johnson	848.5	112
Perry	1208.7	278
Saline	1566.5	412
Union	1544.0	281
<b>Williamson</b>	<b>1203.6</b>	<b>745</b>



Mortality rate in Williamson County is reported at 1204 deaths/100,000 population (IPLAN, 2001). This rate greatly exceeds the rate for the state of Illinois (see table and chart above). The data do not indicate causes of mortality, nor do the data identify specific health care needs that would apply to Williamson County. However, the mortality rate suggests that there are healthcare problems that further investigation may elucidate.

There is always the possibility that one-year mortality data is not representative of the true mortality rate in a small county. However, the rate for 12 years (1990 to 2001) is very similar (1165) and is still high when compared to the 12-year mortality for Illinois (884). Source - IPLAN

#### Five year mortality rates (1997-2001) for Williamson County

Year	Williamson County		Illinois	
	Rate	Count	Rate	Count
2001	1203.6	745	840.1	104,858
2000	1197.5	734	855.8	106,287
1999	1196.7	736	891.5	108,122
1998	1122.3	688	864.0	104,070
1997	1257.0	763	860.8	102,404

# Williamson County, Illinois

## Years of Potential Life Lost

Source: IPLAN data system

Williamson County - 2001	Years
Total for All Races	
Malignant Neoplasms	438
Accidents	430
Motor Vehicle Accidents *	375
Suicide	287
Diseases of Heart	262
Coronary Heart Disease *	205
Firearms	133
Diabetes Mellitus	81
Lung Cancer *	80
Lymph & Hemato Cancer *	73

Illinois - 2001	Years
Total for All Races	
Accidents	80,731
Malignant Neoplasms	75,999
Diseases of Heart	61,568
Perinatal Conditions	47,689
Coronary Heart Disease *	39,589
Motor Vehicle Accidents *	36,679
Homicide	35,179
Firearms	34,289
Suicide	21,079
Congenital Malformation	18,311

\*This is a subcategory of preceding causes

### Definitions:

2.06.02 Cause-Specific Years of Potential Life Lost, ICD-10

This indicator reports the number of Years of Potential Life Lost (YPLL) for deaths before age 65 due to major causes of death, by race. Included among the major causes are subcategories (marked by "@"), such as "coronary heart disease" as a subcategory of "diseases of heart."

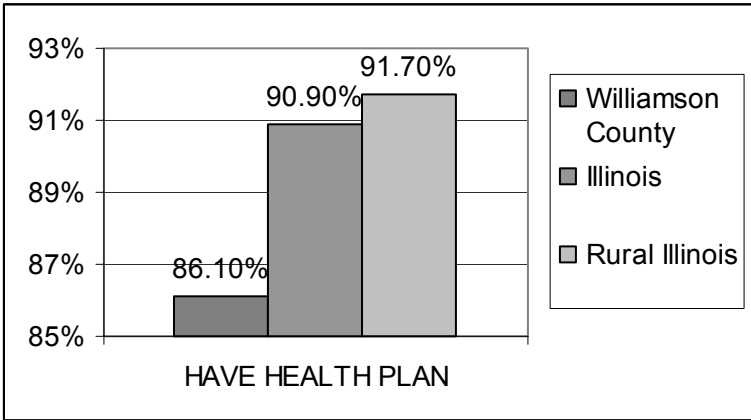
Note: Due to the age groups used in the IPLAN Data System, the YPLL values may vary from other published YPLL values from IDPH.

Firearm deaths can be due to different causes or intentions, specifically homicide, suicide, unintentional injuries, and undetermined injury (i.e., not determined if the death was due to homicide, suicide or accident)

In comparing county and state data, observe that the years potential life lost (YPLL) are a total for all counties in Illinois. It is, however, possible to compare the relative effect of various causes of YPLL. Any factor that causes many deaths and/or causes many deaths of people at a young age, will rise to the top of the YPLL list. It is, however, possible to compare the relative effect of various causes of YPLL between the state and a county. Accidents often claim the life of younger people, thus in the state, represent the largest cause of YPLL. In Williamson County, however, accidents (and specifically motor vehicle accidents) and suicide were causes of large YPLL in 2001.

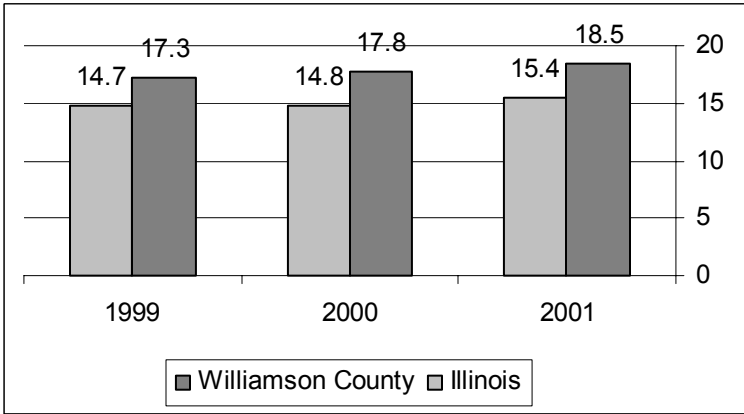
**Williamson County**

**Percent of Population with a Health Plan**



Source: BRFSS

**Population Enrolled in Medicaid**



Source: IPLAN

**MUA/MUP Medically Underserved Areas/Medically Underserved Populations\***

Illinois	WILLIAMSON	Corinth Prec	Designated	59	MUA
Illinois	WILLIAMSON	Creal Springs Prec	Designated	59	MUA
Illinois	WILLIAMSON	East Marion Prec	Designated	59	MUA
Illinois	WILLIAMSON	Lake Creek Prec	Designated	59	MUA
Illinois	WILLIAMSON	Blairsville Prec	Designated	60.9	MUA
Illinois	WILLIAMSON	Carterville Prec	Designated	60.9	MUA
Illinois	WILLIAMSON	Corinth Prec	Designated	59	MUA
Illinois	WILLIAMSON	Creal Springs Prec	Designated	59	MUA
Illinois	WILLIAMSON	East Marion Prec	Designated	59	MUA
Illinois	WILLIAMSON	Lake Creek Prec	Designated	59	MUA

Medical expenses often come unexpectedly. Lack of a health plan often leads to lack of care. This will impact the well-being of a community

Source: <http://bphc.hrsa.gov/databases/newmua/> \* For definitions, see list of sources.

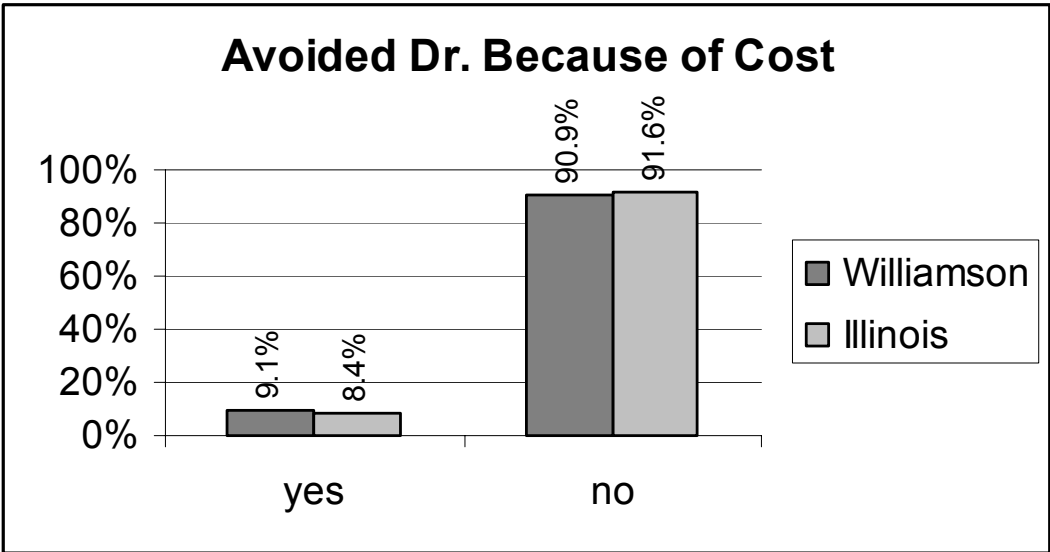
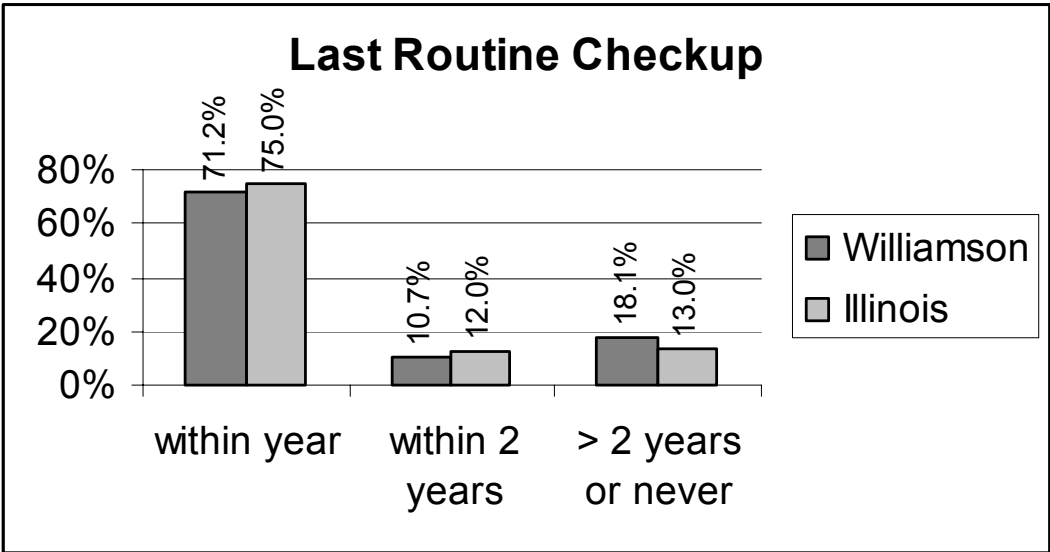
**Medicaid Enrollees to Medicaid Physician Vendors Ratio**

YEAR: 2001	WILLIAMSON	Illinois
Total	116.7:1	91.2:1

Source: IPLAN

Health Care Utilization

Source: BRFSS



## Williamson County, Illinois

### Sentinel Events\* – Five Year Totals (1995-1999)

Source: IPLAN

COUNTY	CATEGORY	COUNTY RATE**	COUNTY COUNT	STATE RATE**	STATE COUNT	** Note: The county and state rates have been calculated from the population (2000 census). The five year county and state counts are from IPLAN data.
WILLIAMSON	Dehydration	10.1	31	14.2	8796	
WILLIAMSON	Fever	0.3	1	0.2	135	
WILLIAMSON	Asthma	23.2	71	67.4	41872	
WILLIAMSON	TB	8.8	27	7.8	4867	
WILLIAMSON	Hypertension	133.5	409	72.1	44787	

#### \* 7.01 Sentinel Events

These indicators include: 1. infants (ages 0-1), hospitalization for dehydration (this indicator reports the number of hospitalizations resulting from gastroenterities or diarrhea), 2. children (ages 1-17), hospitalization for rheumatic fever, hospitalization for asthma, and vaccine-preventable diseases (this indicator reports the number of hospitalizations due to rheumatic fever for children (ages 1-17), hospitalizations due to asthma for children (ages 1-14), and the number of cases of measles, mumps, polio, and tetanus for children (ages 1-17) ), 3. adults (ages greater than or equal to 18), tuberculosis, and hospitalization for uncontrolled hypertension (this indicator reports the number of cases of TB for adults and the hospitalizations for uncontrolled hypertension in adults).

Description: Sentinel health events are those indicators that serve as a warning signal that the quality of care may need to be improved. They assume that unnecessary disease, unnecessary disability and unnecessary untimely death would have been prevented or managed if the health care system had functioned satisfactorily. The occurrence of any of these diseases, disabilities and untimely deaths should indicate that something is wrong in the health care system and can be used to determine the level of health of the general population and the effects of economic, political and other environmental effects upon it (Dever, 1984).

### Sentinel Events – Cancer\*– Five Year Totals (1996-2000)

County	Category	County Rate	County Count	State Rate	State Count	US Rate
WILLIAMSON	ISBC	19.5	34	26.3	8243	30.4
WILLIAMSON	LCC	0	12	4.5	1432	3.4

Note: Rates are per 100,000, age-adjusted to 2000 US standard.

#### 7.02 Sentinel Events - Cancer

Females late cervical cancer (LCC) and in situ breast cancer (ISBC).

This indicator reports the five- year total number of cases and age-adjusted rate (US 2000 std) for females with late stages (regional and late) cervical cancer and in situ breast cancer, by race.

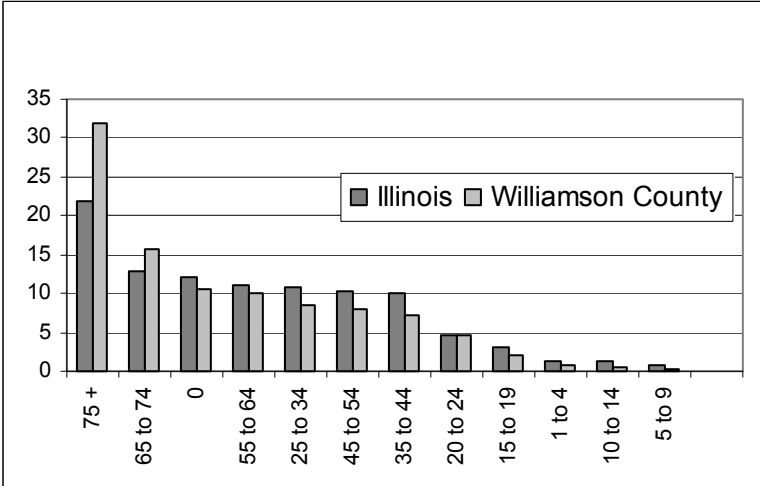
Description:

Sentinel health events are those indicators that serve as a warning signal that the quality of care may need to be improved. They assume that unnecessary disease, unnecessary disability and unnecessary untimely death would have been prevented or managed if the health care system had functioned satisfactorily. The occurrence of any of these diseases, disabilities and untimely deaths should indicate that something is wrong in the health care system and can be used to determine the level of health of the general population and the effects of economic, political and other environmental effects upon it (Dever, 1984). NOTE: rates are suppressed if based on less than 15 cases.

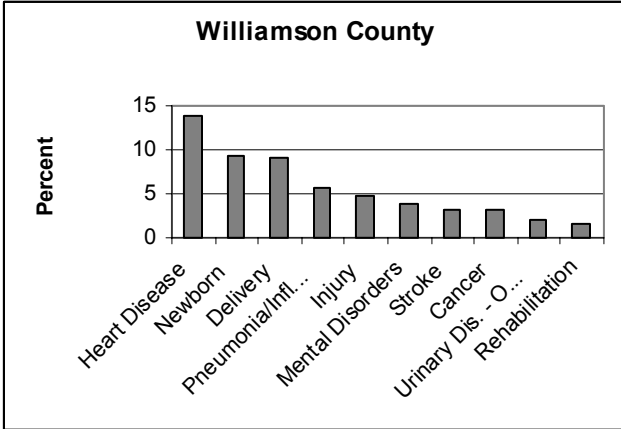
**Hospital Discharge Data**

<http://app.idph.state.il.us/emsrpt/form-hospitalization.asp>

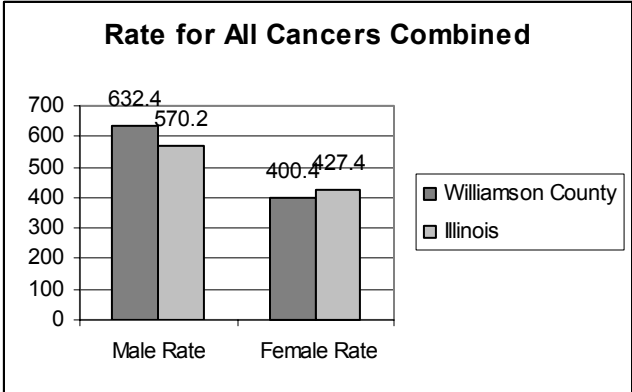
**Age of County Residents discharged from a Hospital, 2001**



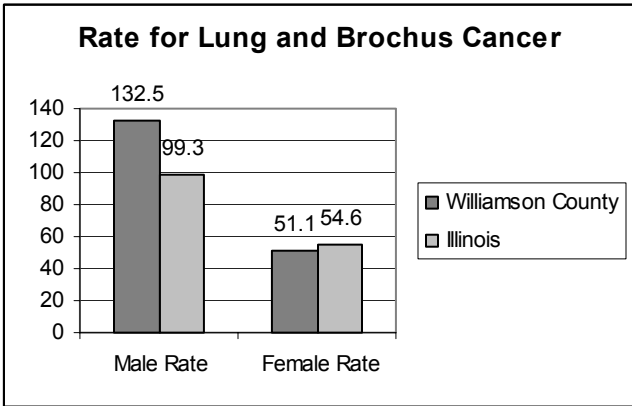
**Leading Ten Diagnoses at Time of Hospital Discharge**



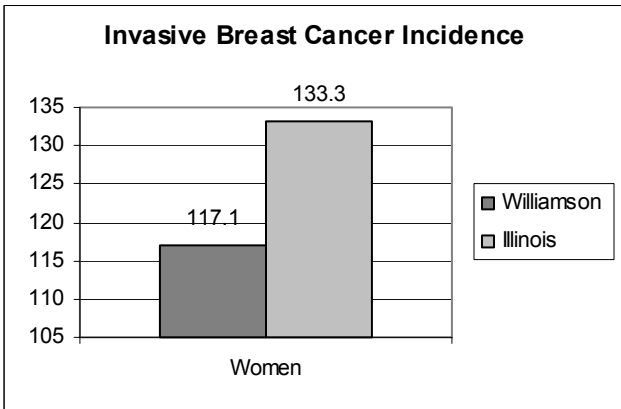
Cancer Incidence – 1996-2000



Cancer rates in Williamson County mirror those for Illinois.



Males in Williamson County have a slightly higher incidence of lung and bronchus cancer compared to state averages.

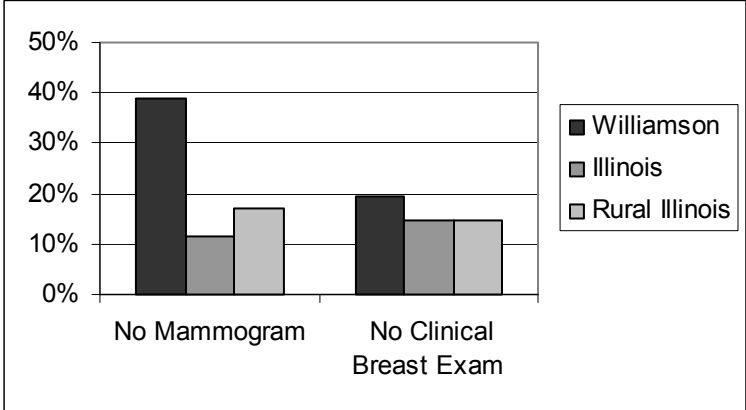


Women in Williamson County have a slightly lower incidence of invasive breast cancer than women in Illinois.

Five Year Cancer Incidence Counts and Age-adjusted rates (US 2000 Std) with 95% CI <http://app.idph.state.il.us/EpiStudies/public/genericdb/code/GenericList.asp>

**Williamson County**  
**Women’s Health – Mammogram**

Percent of Women over 40 Who Have Not Been Examined for Breast Cancer



Of those women who have had mammograms, 14 percent have not had a mammogram in the past year. This compares to 14 percent for the state of Illinois and 15.2 percent of rural county women in Illinois.

Of those women who have had a clinical breast exam, 13 percent have not been examined within the past year. This compares to 9.5 percent for the state of Illinois and 13.6 percent of rural county women in Illinois.

Above data from: IPLAN, at <http://app.idph.state.il.us/brfss/default.asp>

The rate of invasive breast cancer in Williamson County is similar to the rate in the state of Illinois.

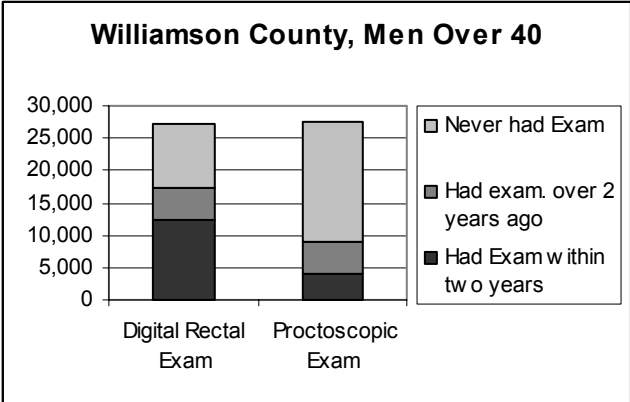
Invasive Breast Cancer Incidence Data, Williamson County and Illinois, 1996-2000				
County	Female Count	Female Rate	Female Lower CI*	Female Upper CI*
Williamson	242	117.1	102.3	133.6
Illinois	43087	133.3	132	134.5

\*Lower and upper CI refers to the confidence interval – a statistical term that implies the true rate is between these two extremes

Source: Illinois Department of Public Health, Illinois State Cancer Registry, Public Dataset as of January, 2003.

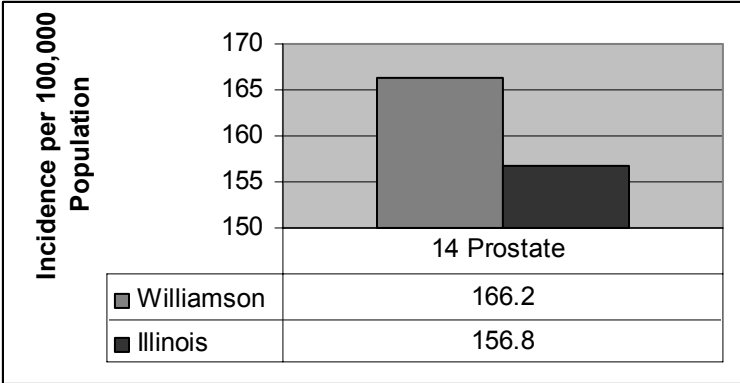
# Williamson County, Illinois

## Colorectal Screening in Men Over Forty Years of Age



<http://app.idph.state.il.us/brfss/default.asp>

## Incidence of Prostate Cancer, 1996 – 2000



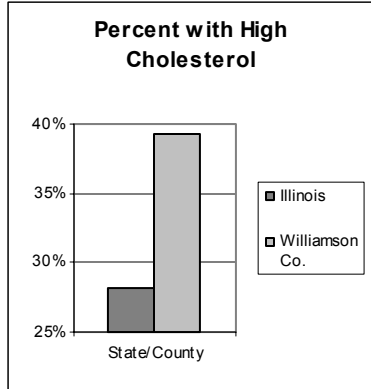
Source: Illinois Department of Public Health, Illinois State Cancer Registry

# Williamson County, Illinois

## Williamson County

### At risk – Cholesterol

Data from: <http://app.idph.state.il.us/brfss/countydata.asp>



2000 Williamson County, Illinois Adults		County	State
HAD CHOLESTEROL CHECKED	yes	70.50%	76.00%
	no	29.50%	24.00%
Total		100.00%	
LAST CHOLESTEROL CHECK	within year	82.40%	85.80%
	> 1 year ago	17.60%	14.20%
Total		100.00%	
TOLD CHOLESTEROL HIGH	yes	39.30%	28.20%
	no	60.70%	71.80%
Total		100.00%	

A high percent (39 percent) of adults in Williamson County have been told they have high cholesterol. Only 71 percent of the adults have had their cholesterol checked, and 18 percent of these have not checked in the past year.

### At Risk – Obesity

Data from: <http://app.idph.state.il.us/brfss/countydata.asp>

2001 Illinois Adults		%
OBESITY	underweight/normal	44.20%
	overweight	36.20%
	obese	19.70%
Total		100.00%

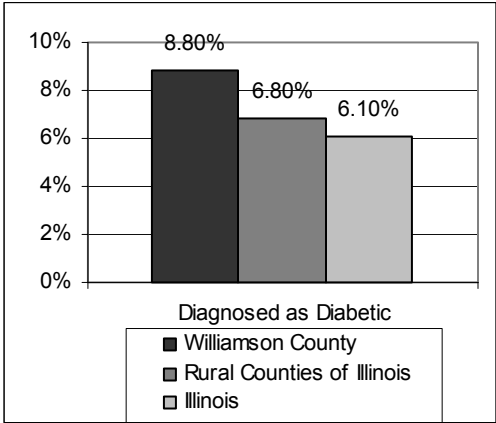
2001 Rural County Adults		%
OBESITY	underweight/normal	40.00%
	overweight	37.10%
	obese	22.90%
Total		100.00%

2000 Williamson County, Illinois Adults		%
OBESITY RISK FACTOR	obese	33.30%
	not obese	66.70%
Total		100.00%

Although the categories in the Illinois and rural county charts above are different from the county data on the left, it is clear that rural counties have a population that tends to greater obesity. The fact that 33 percent of the adult population in Williamson County report themselves as obese is a telling statistic on a local healthcare need.

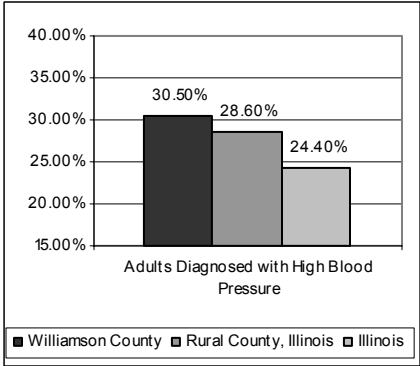
**Williamson County**  
**Heart Disease Risk Factors**

**Diabetes**



Diagnoses of diabetes in Williamson County occur in a slightly higher percentage of the adult population than in the state or in rural counties of the state of Illinois.

**High Blood Pressure**



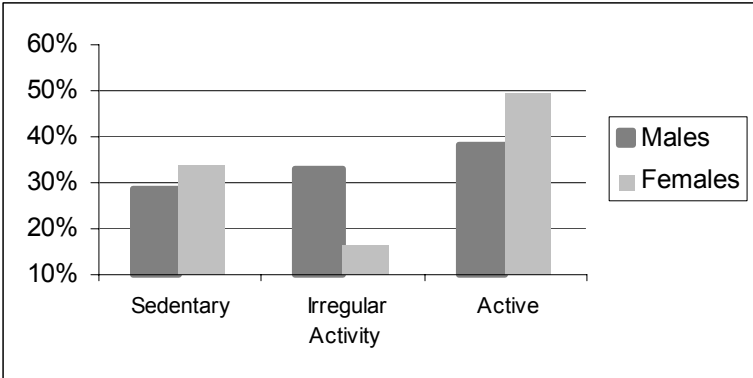
A similar percentage of Williamson County adults are diagnosed with high blood pressure (BP) as in the state or in rural counties of the state of Illinois.

Of Williamson County adults, 73.7 percent have had BP exams in the past year, 13.3 percent have not had a BP measurement in the past year and 12.0 percent have never had BP measured.

Data from: <http://app.idph.state.il.us/brfss/default.asp>

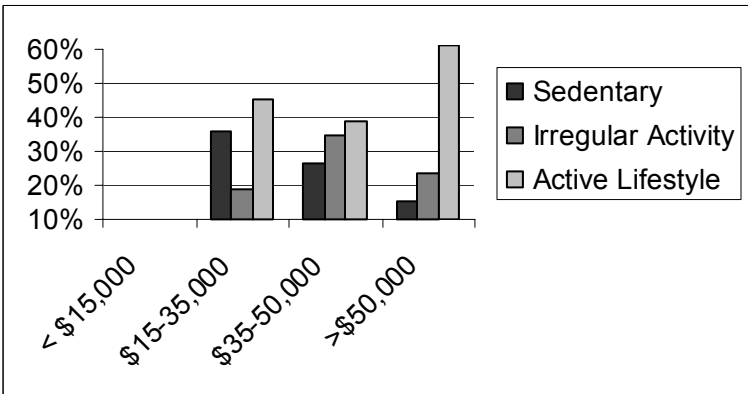
# Williamson County

## Demographics of an Active Lifestyle - Gender



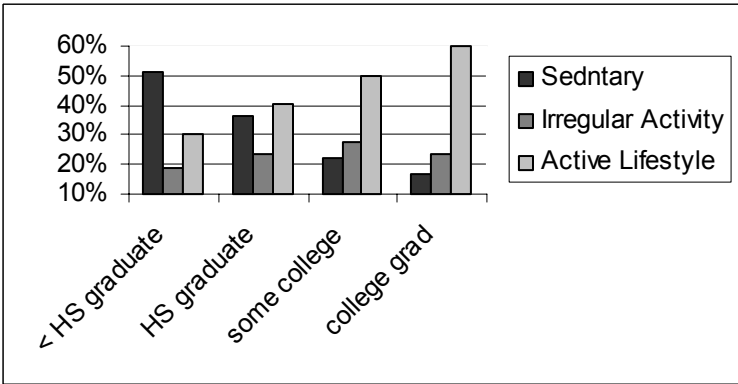
An active lifestyle is apparent in both genders in Williamson County.

## Demographics of an Active Lifestyle – Household Income



Examination of the black bars reveals that lower household incomes tend to produce a more sedentary lifestyle. Examination of the light gray bars reveals that higher income households are more likely to produce a more active lifestyle.

## Demographics of an Active Lifestyle – Education



Income and education are correlated – and the same trend in physical activity seen with household income is evident when analyzed by educational attainment.

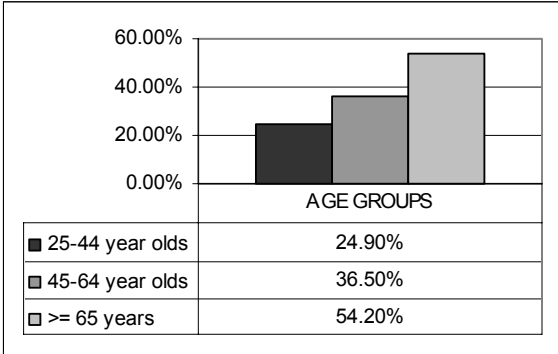
Data from: <http://app.idph.state.il.us/brfss/countydata.asp>

*There is a strong correlation an active lifestyle and maintenance of a proper body weight. Regular physical activity, even if only moderate, is associated with lower death rates for adults of any age.*

*Adapted from: York PA brochure*

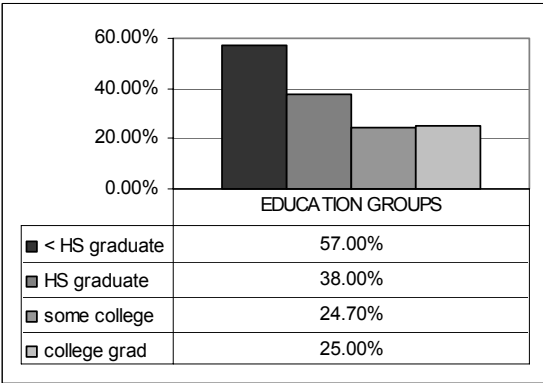
**Sedentary Lifestyle**

Data source: 2000 Bi- County BRFS

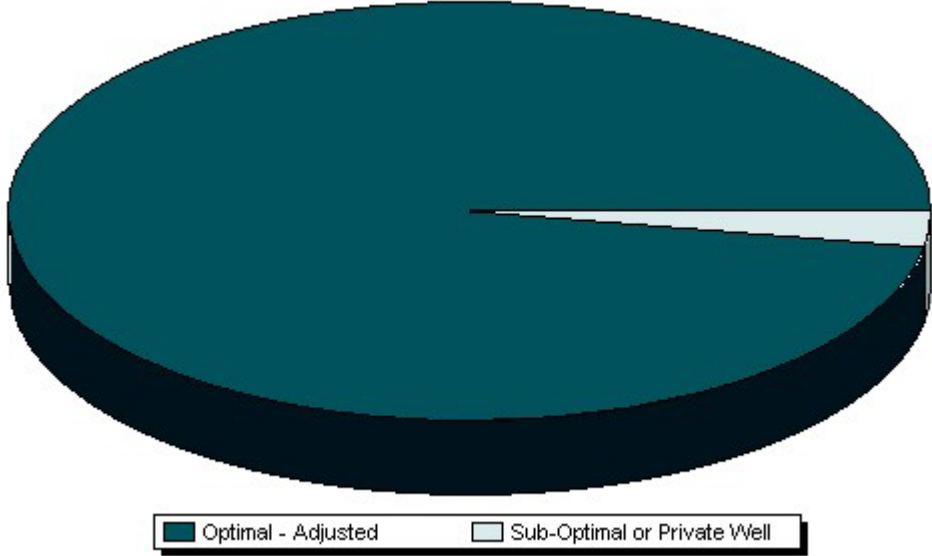


The percentage of the population leading sedentary lifestyles increases with age. These data suggest that health programs to encourage physical exercise would benefit the older population. If the percentage of the population who were sedentary could be held at the 25 percent level found in younger adults, there should be a decrease in such maladies as heart disease, hypertension and diabetes.

The relationship between a sedentary lifestyle and level of education is clearly demonstrated in the graph. The more education, the lesser percentage of the population is reported as sedentary. Programs that promote physical activity should focus on the population with less education to increase overall health in the county. The relationship also holds for level of income (not shown). Programs to promote physical activity should focus on the lower income population.



**Williamson County Public Water Systems (PWS)  
Population VS. Fluoridation Status**



Group	Number of People	County PWS Population %
Optimal - Adjusted	63,506	102.9%
Optimal - Natural	0	0.0%
Sub-Optimal or Private Well	-1,793	-2.9%
Total	61,713	100%

## **Health Risk Behaviors**

*Indicators of the health of the residents in a county are descriptors of the vitality and life of its communities. These indicators include access to health care, the incidence of disease, and the extent to which residents engage in health risk behaviors. A community's health goes beyond these areas to examine issues of safety, environment and crime. While many take for granted the ability to see a doctor or access an emergency room, the reality is that many people do not get this access, and thereby endanger their health and their lives.*

# Williamson County, Illinois

## Gonorrhea Cases – Williamson County

1991 - 2001

COUNTY	1991	1992	1993	1994	1995	1996	1997	1998	1999	2000	2001
WILLIAMSON	16	21	25	6	17	24	26	17	15	14	20
<b>TOTAL ILLINOIS</b>	<b>33,823</b>	<b>29,275</b>	<b>26,593</b>	<b>24,511</b>	<b>20,515</b>	<b>19,324</b>	<b>19,524</b>	<b>22,499</b>	<b>24,136</b>	<b>24,812</b>	<b>24,025</b>
<b>Total IL Excluding Chicago</b>	12,218	10,821	9,292	9,705	9,159	7,010	7,208	8,356	8,967	9,940	9,699

## Gonorrhea Rates - Williamson County

1991 - 2001

COUNTY	2000 Population	1991	1992	1993	1994	1995	1996	1997	1998	1999	2000	2001
WILLIAMSON	61,296	27.7	36.4	43.3	10.4	29.4	41.6	45	29.4	26	22.8	32.6
<b>ILLINOIS TOTAL</b>	12419293	295.9	256.1	232.6	214.4	179.5	169.1	170.8	196.8	211.2	199.8	193.4
<b>Total IL Excluding Chicago</b>	9523277	141.3	125.1	107.5	112.2	105.9	81.1	83.4	96.6	103.7	104.4	101.8

Rates are per 100,000 population

## Chlamydia Rates – Williamson County

1991 - 2001

COUNTY	2000 Population	1991	1992	1993	1994	1995	1996	1997	1998	1999	2000	2001
WILLIAMSON	61,296	143.8	117.8	155.9	98.7	110.9	90.1	88.3	72.7	100.5	104.4	145.2
<b>ILLINOIS TOTAL</b>	12419293	202.1	220.9	215.2	204.1	216.3	230.8	255.3	287.5	318.5	324.9	352
<b>Total IL Excluding Chicago</b>	9523277	154.5	152.8	155.3	146	149.8	144.4	162.1	183.2	211.5	215.9	223.6

Rates are per 100,000 population

Williamson County has a low rate of infections reported of both gonorrhea and chlamydia. There have been no reported cases of syphilis since 1997. Rate of STD infections is consistently lower than Illinois as a whole and in Illinois excluding Chicago.

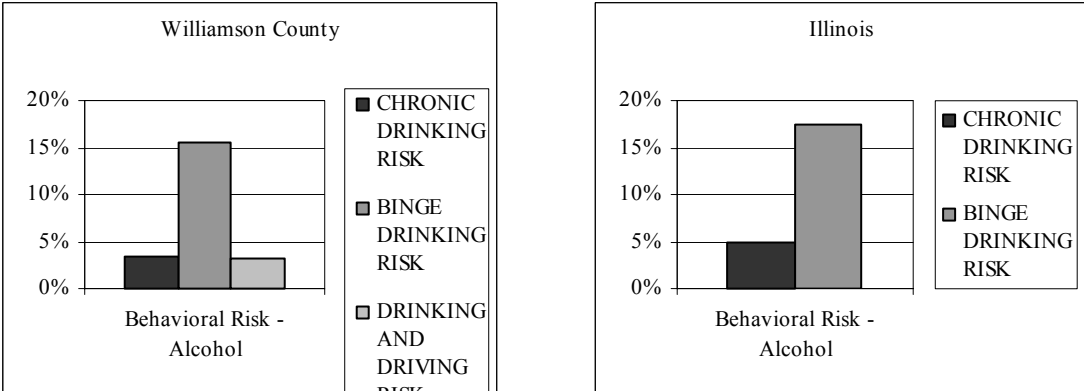
Source: IPLAN

*Transmission rates for STDs (number per population of 100,000) are a measure of the at-risk sexual behavior in the county*

# Williamson County, Illinois

## At Risk – Alcohol

<http://app.idph.state.il.us/brfss>



Alcohol abuse in Williamson County is similar to that of the state of Illinois. Self-reported data for chronic drinking is lower than for the state. Only 0.1 percent of hospital discharges (1999 through 2001) were from chronic liver disease or cirrhosis – compared with 0.3 percent for the state of Illinois. (<http://app.idph.state.il.us/emsrpt>)

\* Note: The data set for the state of Illinois differed from that for the individual counties, in that there were no data on the behavioral risk for drinking and driving for the state

## Williamson County – Smoking rates

2000 Williamson County, Illinois Adults		Count	Col %	Unweighted Count
SMOKING STATUS	smoker	11598	26.10%	104
	former smoker	13112	29.50%	115
	non-smoker	19788	44.50%	176
Total		44498	100.00%	395
AMOUNT SMOKED PER DAY	1 pack or less	8011	70.50%	71
	more than 1 pack	3358	29.50%	31
	Total	11369	100.00%	102
QUIT SMOKING 1 OR MORE DAYS	yes	4935	42.50%	43
	no	6663	57.50%	61
	Total	11598	100.00%	104
LAST SMOKED REGULARLY	within past year	2259	17.20%	19
	more than a year ago	10670	81.40%	93
	never			3
	Total	13112	100.00%	115

\*Unweighted counts represent the number of survey respondents who fit each category.

\*Counts represent the projected number in the county for each category and is based upon the number responding in the survey.

\* “Col%” or “Row%” indicates the percentage of the population that fit each category.

Smoking is among the leading causes of death that is preventable. It causes death by heart disease, cancer and respiratory illnesses. It leads to more deaths than AIDS, alcohol, cocaine, heroin, homicide, suicide, motor vehicle crashes and fire combined.

2001 Illinois Adults		Count	Col %	Unweighted Count
SMOKING STATUS	smoker	2,117,560	23.20%	934
	former smoker	2,162,233	23.70%	978
	non-smoker	4,834,003	53.00%	2,064
Total		9,113,796	100.00%	3,976
STOPPED SMOKING FOR ONE DAY OR MORE	yes	1,216,219	57.40%	522
	no	901,342	42.60%	412
	Total	2,117,560	100.00%	934

“The average teenage smoker begins to smoke at 14 and becomes a daily smoker before age 18. And those children soon regret this loss of freedom. A Gallup Poll in 1992 found that 70 percent of smokers between the ages of 12 and 17 regret beginning to smoke and 66 percent want to quit.”

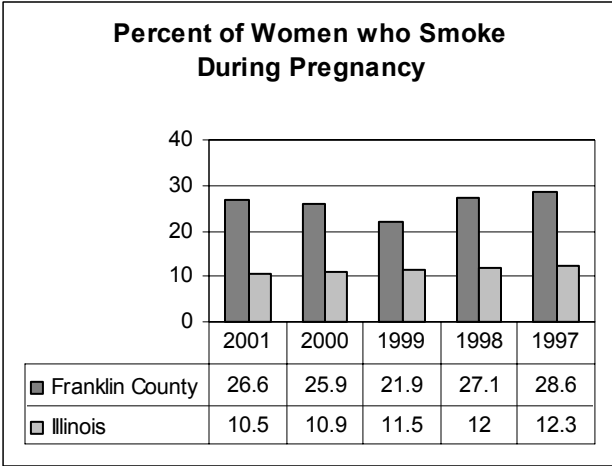
“Of the almost 3,000 young people who became regular smokers each day, nearly 1,000 of them will have their lives shortened from tobacco-related diseases.”

U.S. Department of Health and Human Services

2001 Rural County Adults	smoker			former smoker			non-smoker		
	Count	Row %	Unwt Count	Count	Row %	Unwt Count	Count	Row %	Unwt Count
	430,303	26.60%	238	430,303	0.266	238	774,611	0.479	425

Data from: <http://app.idph.state.il.us/brfss/countydata.asp>

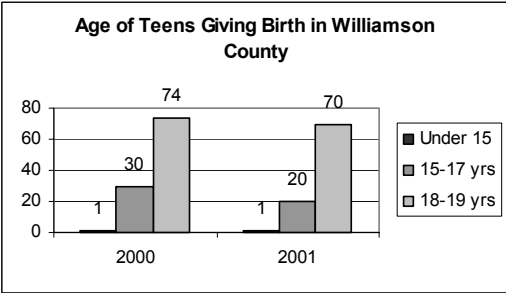
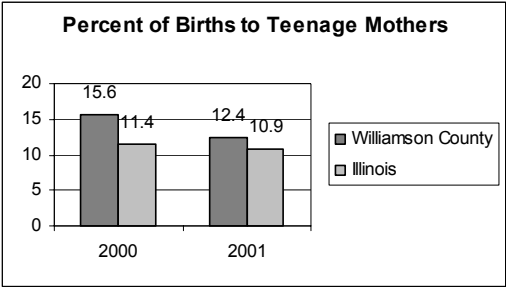
**Percent of Women who Smoke During Pregnancy**



The percent of women who report they smoked during pregnancy in Franklin County is more than double the rate for the state of Illinois. The rates may be actually higher, since these data were calculated by dividing the number of women who reported smoking during pregnancy by the total live births. Smoking is known to cause miscarriage in some women, among other problems.

Data from: <http://app.idph.state.il.us/data/CountyLevel.asp?menu=1>

**Births to Teen Mothers**



Data from IDPH, accessed at <http://www.idph.state.il.us>

Teen mothers are at higher risk to not complete high school, and to require welfare. Children of teenage mothers risk a lower birth weight, poor performance in school, and abuse and neglect. Sons are more likely to be imprisoned; daughters are more likely to become teen mothers. In Williamson County, the percent of births to teenage mothers slightly exceeds that for the state of Illinois in the years 2000 and 2001. As expected, the older teens (18-19 years) represent the group most likely to become pregnant.

# Williamson County, Illinois

## Immunizations

Source: IPLAN

**Healthy People 2010 Objective: By 2010, increase immunization levels among children aged 19 to 35 months to at least 90 percent (Objective 14-22a through 14-22f).**

County	Category	County Rate	County Count	State Rate
WILLIAMSON	Basic Series	81		77.6

Note: Illinois number does not include Chicago.

**Healthy People 2010 Objective: By 2010, reduce indigenous cases of vaccine-preventable diseases: 0 for diphtheria, 0 for tetanus, 0 for polio, 0 for measles, 0 for rubella, 0 for mumps, and 2,000 for pertussis (Objective 14-01b, 14-01e through 14-01j).**

### VACCINE PREVENTABLE DISEASES

County	Category	County Rate	County Count	State Rate	State Count
WILLIAMSON	Total		22		4027
WILLIAMSON	Diphtheria		0		0
WILLIAMSON	Pertussis		10		1699
WILLIAMSON	Tetanus		0		15
WILLIAMSON	Measles		0		1485
WILLIAMSON	Mumps		11		782
WILLIAMSON	Rubella		1		46
WILLIAMSON	Polio		0		0

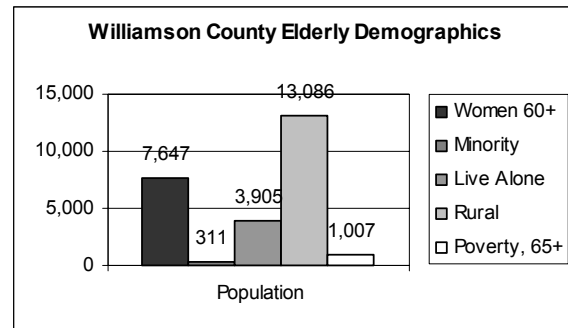
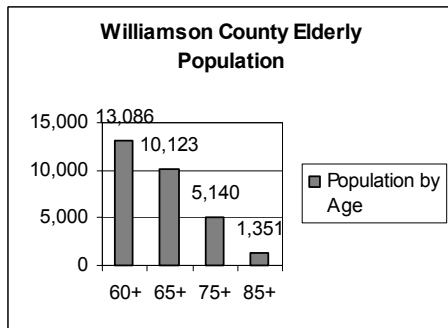
Year Group (9): 1998, 1997, 1996, 1995, 1994, 1993, 1992, 1991, 1990

## **Crime and Violence**

*Violent crimes, spousal abuse and child abuse are indicators of the health of a community. Violence can rapidly destroy a sense of well-being in a community.*

# Williamson County, Illinois

## Elder Abuse



Data from: <http://www.state.il.us/aging/2demografx/CensusMap.htm>

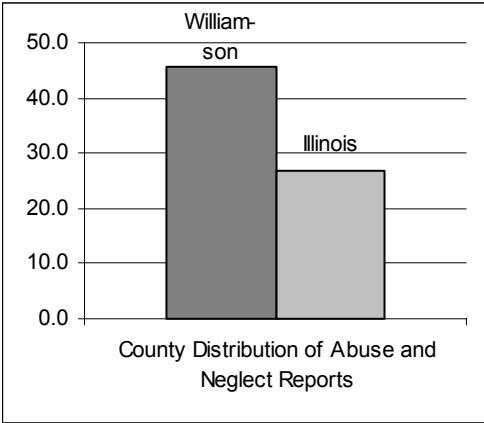
The population and demographics of the elderly in Williamson County are shown in the charts above. All elderly in the county are considered “rural.” State of Illinois services to the county are provided through the Egyptian Area Agency on Aging (<http://www.egyptianaaa.org/>), serving the southern 13 counties of Illinois.

Elder abuse in Illinois and this region is described as follows;

*It is estimated that 4 percent of older persons are abused, neglected or financially exploited. There were 5,883 elder abuse cases reported to the Illinois Department on Aging in FY 97. Approximately 80 percent of the abusers were relatives of the victim (adult children, spouses or other relatives). The city of Chicago had 1,024 reports of elder mistreatment, suburban Cook County had 896 reports, the Peoria area had 458, and the southern 13 counties had 762 reports in FY 98. **The southern 13 counties had the highest percentage increase in reporting of all areas compared to FY97 statistics.** (Illinois Department on Aging <http://www.state.il.us/aging/>)*

# Williamson County, Illinois

## Child Abuse



Child abuse in Williamson County is much higher than in the state of Illinois.

<http://www.state.il.us/dcfscants2002table7.shtml>

## Williamson County, Illinois

### Violent Index Offenses Williamson County

Offense Name	Year				
	1997	1998	1999	2000	2001
Murder	3	2	5	0	1
Criminal Sexual Assault	27	19	36	24	27
Robbery	16	14	18	12	12
Aggravated Assault	84	94	81	87	96
<a href="http://www.icjia.state.il.us">http://www.icjia.state.il.us</a>					

### Crimes Against Children and Domestic Violence

Year	Crimes against Children	Domestic Violence
2002	87	295
2001	55	262
%change	58.20%	11.20%

Illinois State Police Report, 2002

[http://www.isp.state.il.us/docs/cii/cii02/cii02sectionii\\_crimeindex&rate.pdf](http://www.isp.state.il.us/docs/cii/cii02/cii02sectionii_crimeindex&rate.pdf)

*Violence often brings fear into a community. Domestic violence may bring a tragic ending to an on-going situation, and is an indication of overall public safety. Children who are abused often become abusive parents.*

## **Sources**

*The data contained herein are largely collected from publicly accessible internet web sites. After downloading the specific data for the county, graphs, charts and tables have been constructed and assembled. There is a wealth of further information present on the internet, both from the sources listed and used herein, and from many additional sources. Neither the data nor the sources used are intended to be all-inclusive.*

# Williamson County, Illinois

## Sources

<http://www.census.gov> Census data – demographics, etc.

<http://censusscope.org> Census data with some analysis, graphs and charts

<http://capitalimpact.com> Detailed data on every county in U.S. (used by congress).

<http://nces.ed.gov/ccd/bat/index.asp> Information of every school in the U.S.

[http://www.cdc.gov/nccdphp/dash/about/school\\_health.htm](http://www.cdc.gov/nccdphp/dash/about/school_health.htm) Coordinated school health

<http://bphc.hrsa.gov/databases/newmua/> Data on medically underserved areas

<http://app.idph.state.il.us/IPLANDataSystem.asp?menu=1> IPLAN Site

<http://app.idph.state.il.us/brfss/> Risk behavior data

<http://app.idph.state.il.us/emsrpt/> Hospitalization data

<http://app.idph.state.il.us/EpiStudies/public/genericdb/code/GenericList.asp> Cancer data

<http://www.lib.uchicago.edu/e/su/med/healthstat/mental.html> Mental Health data

<http://www.lib.uchicago.edu/e/su/med/healthstat/mental.html> Illinois Household survey on Alcohol, Tobacco and Substance Abuse

<http://www.icjia.state.il.us> Source of information on violent crimes.

<http://hcup.ahrq.gov/SafetyNet/SafetyNet.asp>

Elder Abuse and Elder Services (<http://www.egyptianaaa.org/>)

[www.bea.gov](http://www.bea.gov) Economic data by U.S. County

[http://www.illinoisbiz.biz/com/community\\_profiles/c.html](http://www.illinoisbiz.biz/com/community_profiles/c.html) - Business profiles of Counties

<http://www.state.il.us/aging/2demografx/CensusMap.htm> Information on Elderly

<http://www.state.il.us/dcf/cants2002table7.shtml> Statistics on child abuse

<http://www.icjia.state.il.us> Violent Crime data

[http://www.isp.state.il.us/docs/cii/cii02/cii02sectionii\\_crimeindex&rate.pdf](http://www.isp.state.il.us/docs/cii/cii02/cii02sectionii_crimeindex&rate.pdf) Adobe Acrobat (pdf) file from Illinois State Police – includes domestic violence and crimes against Children data.