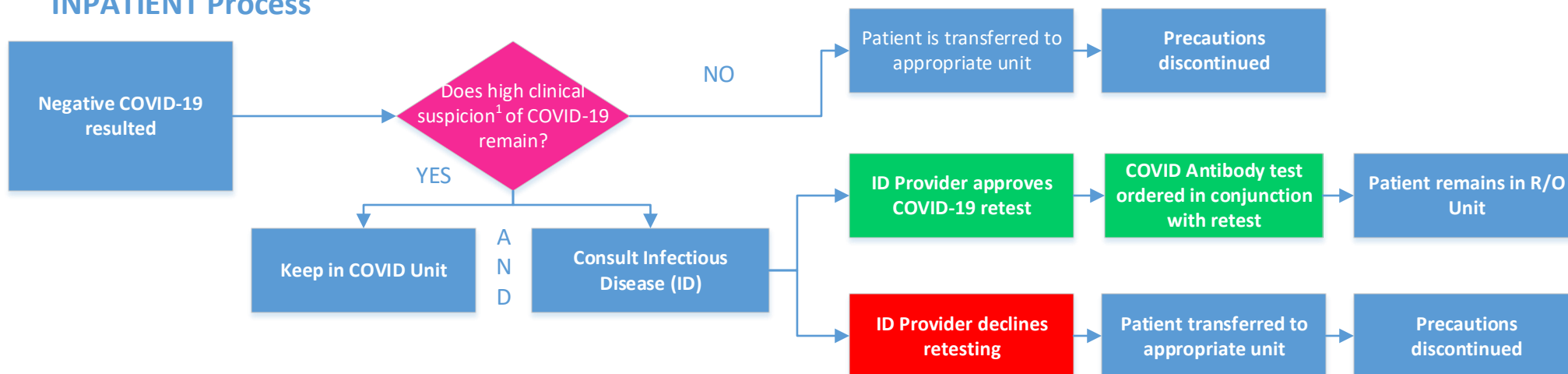


# COVID-19 Guidelines for Retesting After Negative Results

6/05/2020

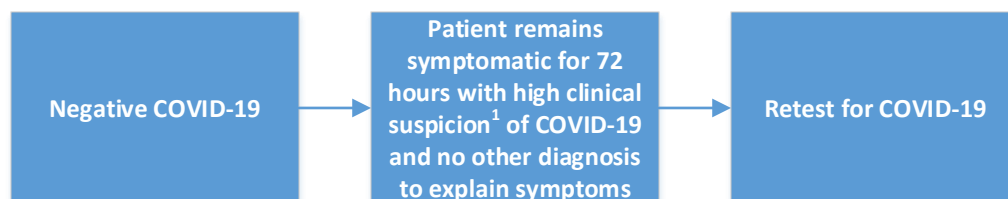
## INPATIENT Process



Of Note: This process is applicable to any patient population.

The populations who are considered **High Risk** = All congregate living situations, e.g. nursing homes, jails, prisons, dorms, detention centers, treatment centers, etc.

## OUTPATIENT Process



### <sup>1</sup>High Clinical Suspicion:

- Concerning history/clinical presentation
  - Persistent fevers and respiratory symptoms
- Abnormal labs:
  - Lymphocyte <0.8K/uL
  - Ferritin >500ng/mL
  - CRP >10mg/dL
  - D-dimer >1ug/mL FEU
- Imaging with stereotypical pattern:
  - CT: Multi-lobar bilateral ground glass opacities
  - CXR: Bilateral lung infiltrates

Acute Respiratory Distress Syndrome (ARDS)

Septic Shock without alternate source

Multi-organ failure without alternate source